



16X24 HIP SHED PLAN

FREE STREAMLINED VERSION



Supported & Recommended by our Friends & Partners:

wikiHow

Sarah x Sarah

MOVOTO

'BOUT HOME

eHow

COMPARISON BETWEEN OUR FREE & PREMIUM PLANS



VS.



PREMIUM 16X24 SHED PLAN:

- Instant email delivery (PDF) download
- Views from all angles
- Measurements for every part
- Full layouts for every step
- Step-by-step assembly instructions
- Full material / shopping list
- Full cutting list
- PRO-TIPS for every section
- Mobile / Tablet / PC / MAC ready
- Beginner friendly

FREE 16X24 SHED PLAN:

- Basic schematics
- Basic angles
- Basic measurements
- Simplified instructions
- No material list

NEED MORE INFORMATION ON THIS PREMIUM 16X24 SHED PLAN?

[**LEARN MORE!**](#)

AVAILABLE ONLY AT THE OFFICIAL 3DSHEDPLANS™ WEBSITE

DISCLAIMER

3DSHEDPLANS™ is here to help and assist the DIYer. All information / advice is for general guidance only and whilst every effort is made to ensure that it is correct, it should not be relied upon as accurate. The information / advice contained within this document is intended for persons of no less than 18 years of age. Use of the information / advice contained within this document is at your own risk. It is the sole responsibility of any person(s) using the information / advice contained within this document that their level of competence is appropriate for the task they want to complete. All users of information / advice contained within this document should have all work checked / tested by a professional qualified trades person where applicable. You should be aware of current regulations on buildings, gas, water and electrical works (i.e. Part P) if you have any doubts we would advise you to research further information or contact the appropriate professional body.

LIABILITY

3DSHEDPLANS™ and Netholics Media, LLC with the document through ownership and contribution will not accept any liability for any loss, damage, injury or negligence direct or indirect from use of the information / advice contained within this document. Any dispute arising from use of this document or disclaimer will be decided by the US courts under the relevant US law.

COPYRIGHT

3DSHEDPLANS™ is official & registered trademark in the US. All of the contents (text/slogan) and artwork (graphics/logo) within this document are the copyrighted and trademarked property of 3DSHEDPLANS™ & Netholics Media, LLC. No part of the text or artwork may be reproduced by any means or in any form whatsoever without written permission, except for brief quotations embodied in literary articles or reviews. And no part of this document may be reproduced without written permission of the owners. This Information may be stored on computer for personal use only by the client (who purchased the plans from our official store), not for presentation or publication.

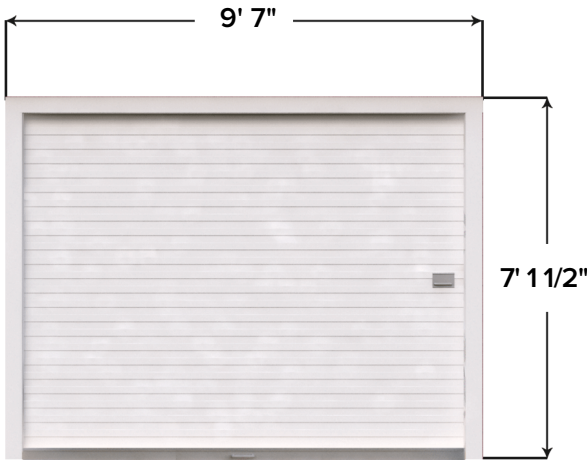
1 BASIC OVERVIEW AND DIMENSIONS

This 16x24 hip shed is massive and exquisite, making it the ideal shed for leisure activities as well as storing your gardening supplies. The overall height of this shed is 12 feet and 5 1/2 inches with the width being 16 feet and 1 inch. There is a huge door in the front with a width of 9 feet and 4 inches and height of 7 feet and 4 inches. The side width of the shed is 24 feet and 1 inch with the roof being 25 feet and 7.5 inches in width. There is a mid-size window on the side with a width of 3 feet and height of 3 feet.

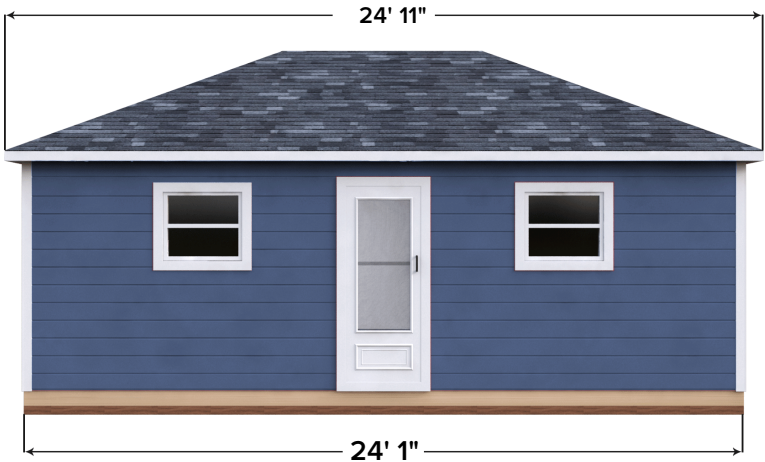
Note that the windows and doors need to be either separately built or purchased and therefore will not be included in this shed building plan.



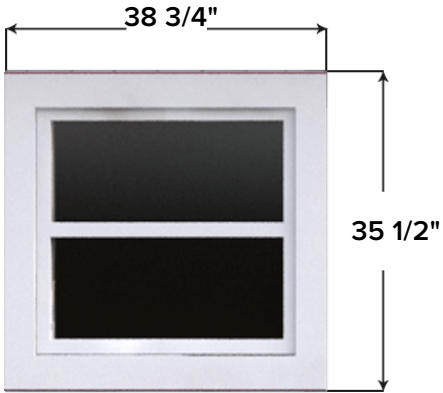
FRONT VIEW



DOOR



SIDE VIEW



WINDOW

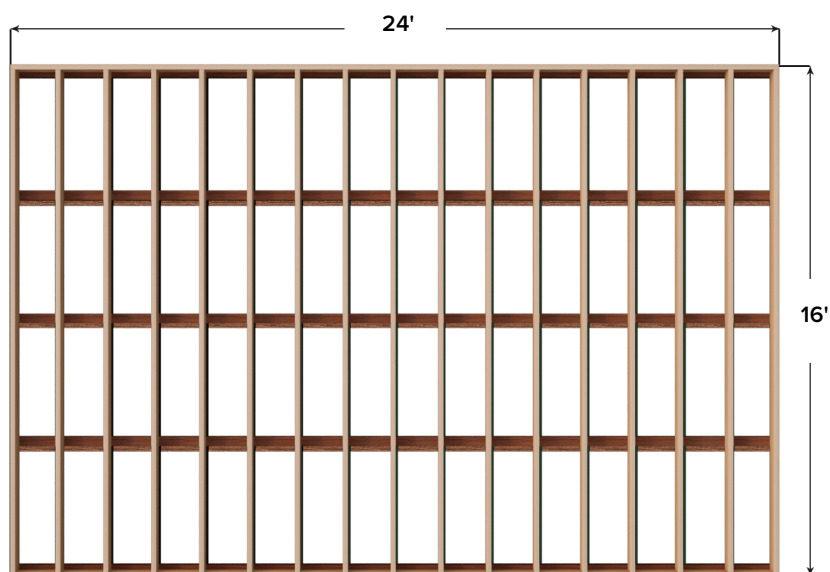
NOTE

Professional tip section is only available in PREMIUM (full) version of the plan.

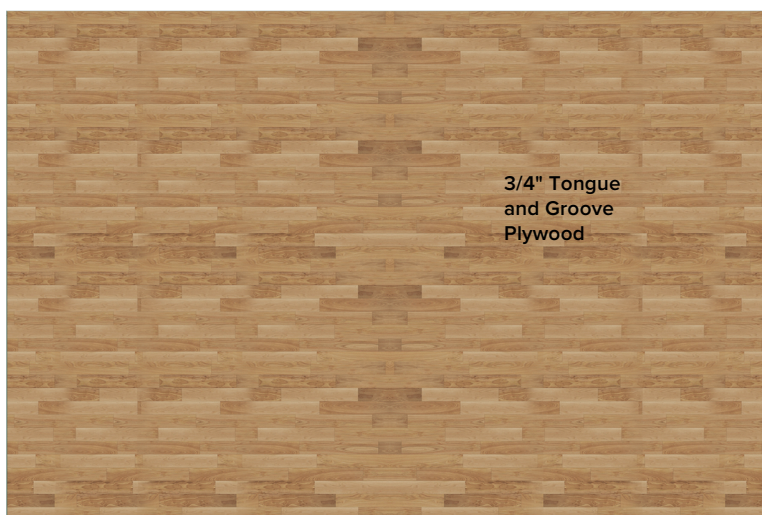
2 FOUNDATION AND FLOOR

The first phase is to build the foundation and the floor. Make sure the foundation has all the joists and skids fit perfectly with each other. Any complication in the foundation will compromise the entire structure of the shed since the foundation will be bearing the entire weight. Use pressure heated timber skids and build a foundation base of 24 feet width and 16 feet length as shown in the figure.

Once the foundation is developed, use $\frac{3}{4}$ inches thick tongue and groove plywood for the floor. Use L joints and skids to assemble the parts together. Use galvanized nails to fit skids and joists together.



FOUNDATION BASE



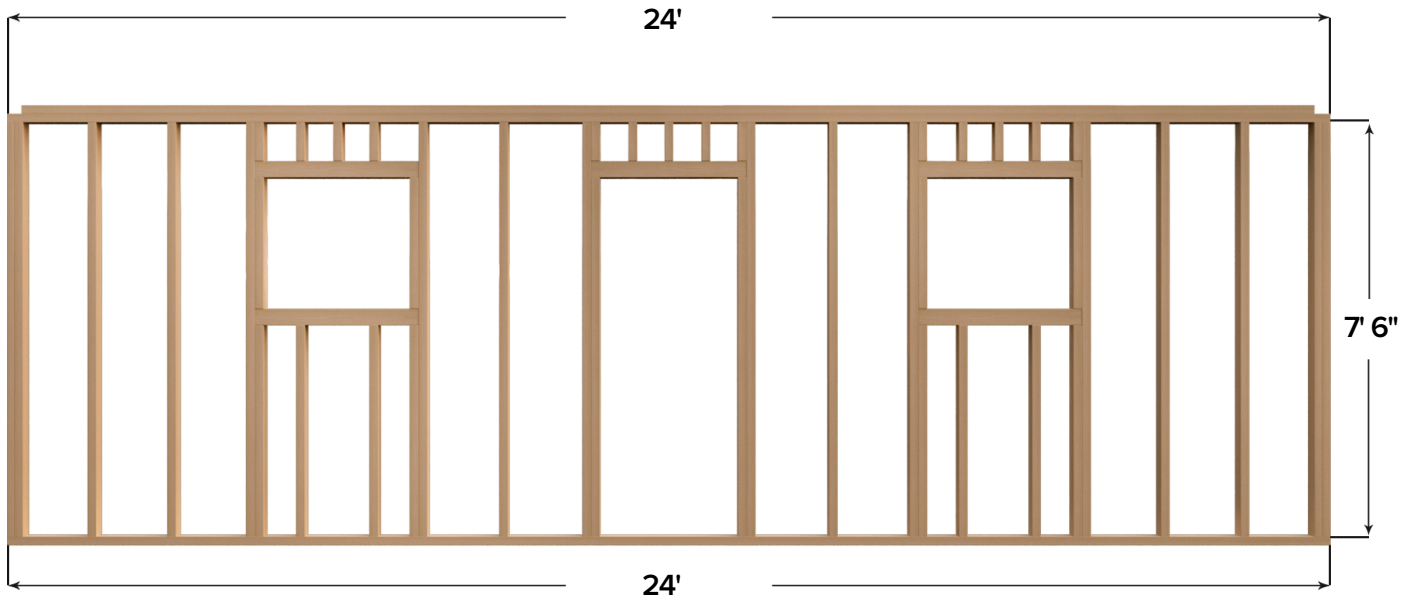
FLOOR

NOTE

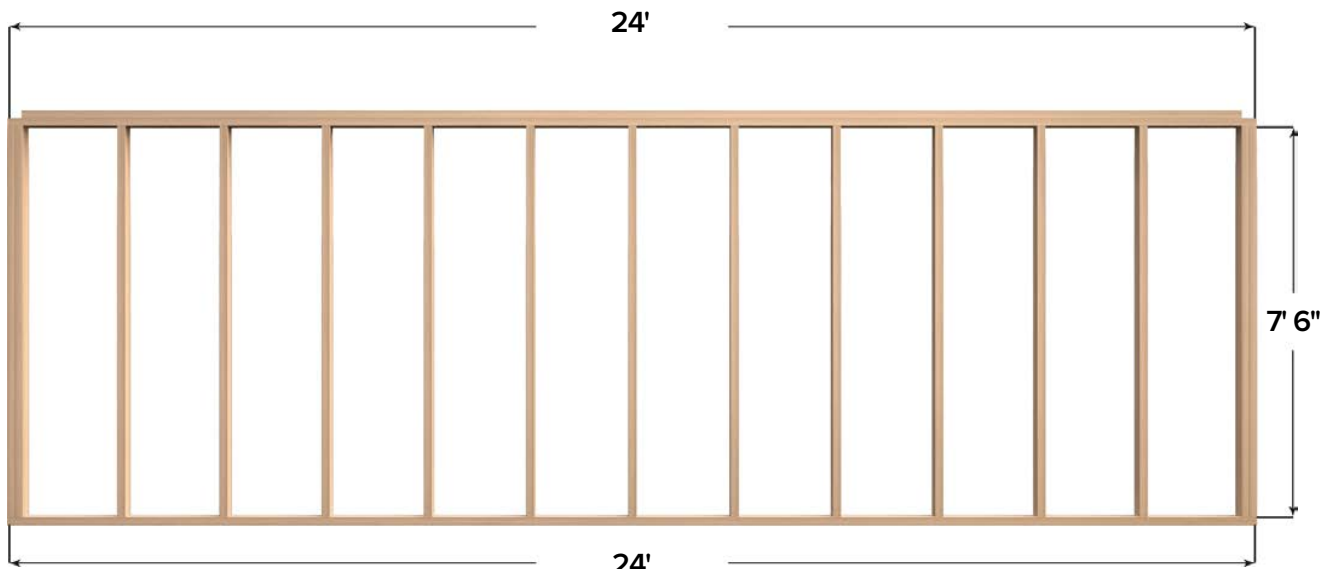
Professional tip section is only available in PREMIUM (full) version of the plan.

3 WALL STRUCTURES

Once the floor and the foundation is built, you will start building the right and the left wall. Use pressure heated timber to build the walls with a width of 24 feet and height of 7 feet and 6 inches as shown in the figure. Leave out space for the window and the door in the right wall. Use L joints, skids and joists to assemble the parts together. Once the structures are built, install T1-11 on the walls with galvanized nails and exterior screws.



RIGHT WALL



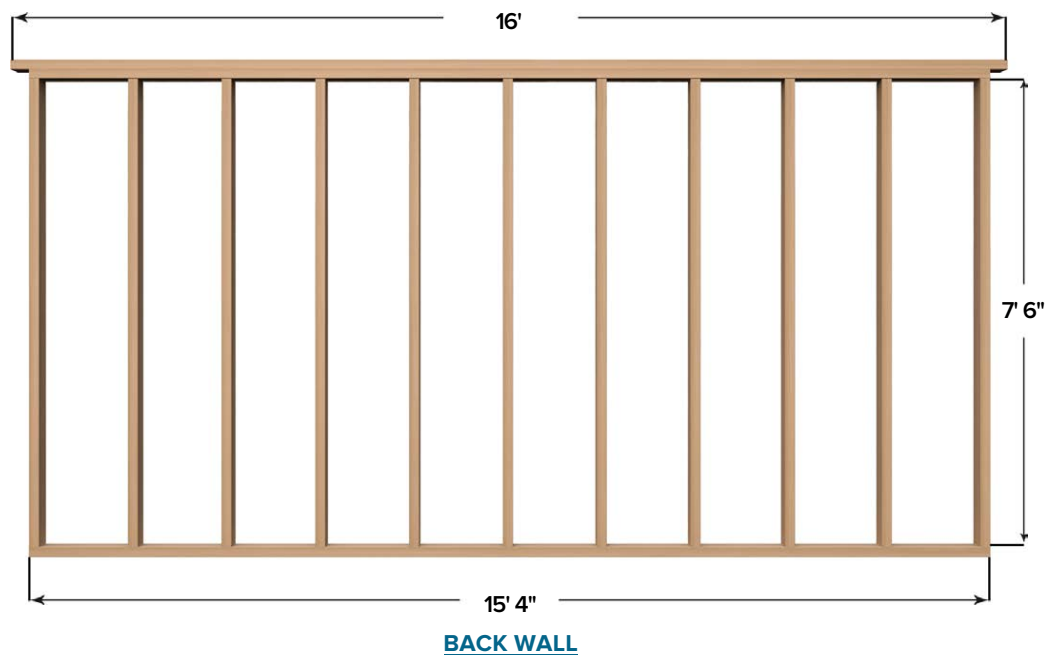
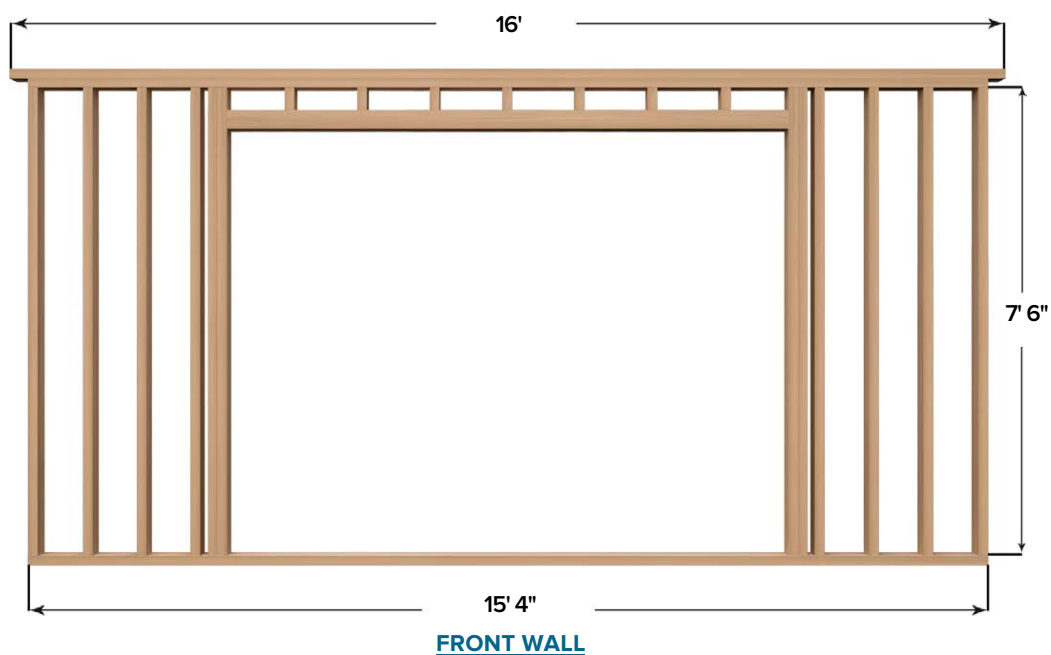
LEFT WALL

NOTE

Professional tip section is only available in PREMIUM (full) version of the plan.

4 WALL STRUCTURES

After the right and the left wall, you will start building the front and the back wall. The width of both the walls will be 15 feet and 4 inches at the bottom and 16 feet on the top. The difference in the width is to accommodate the roof. The height should be 7 feet and 6 inches. Use pressure heated timber for building the structures. Use L joints, skids and joists to assemble the parts together. Once the structures are built, install T1-11 with galvanized nails and exterior screws to finish them.



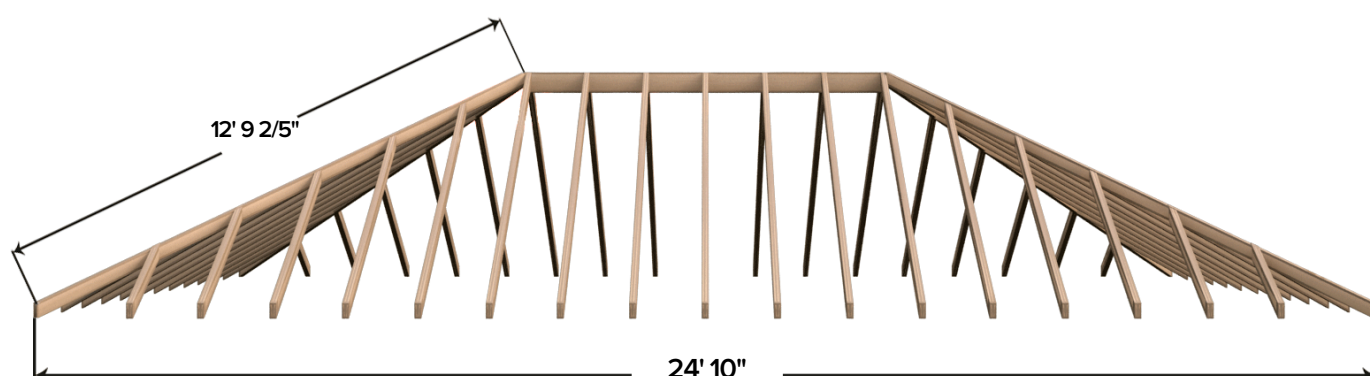
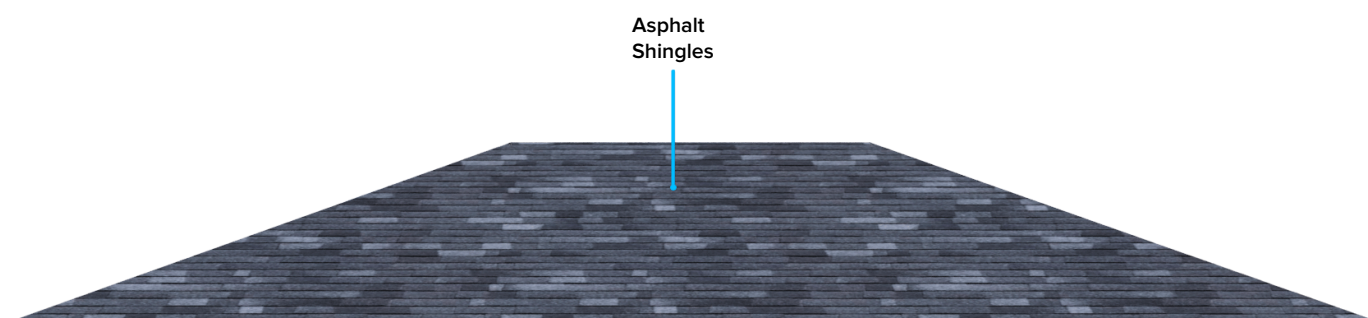
NOTE

Professional tip section is only available in PREMIUM (full) version of the plan.

5 ROOF SECTION

Once all the walls are built, you will start working on the roof. Note that roofing is a complex and strenuous task. Therefore, it is recommended to have additional help while working on the roof. You will use 2x4 stud to build 14 roof rafters each side with a diameter of 9 feet and 6 inches for each. Once built, you will spread them over a width of 24 feet 11 inches as shown in the figure. Use L joints and skids to firmly attach the rafters. Use T1-11 on the two outer most rafters of the roof with galvanized nails.

Start installing asphalt shingles once the roof is built. Use old asphalt shingles to save money.



NOTE

Professional tip section is only available in PREMIUM (full) version of the plan.

wikiHow

MOVOTO

eHow

Sarah x Sarah

'BOUT HOME



**Wait no more! Save time & money now...
Get your own professional 16X24 hip shed
plan and start building your dream shed today!
[Click here and go PREMIUM!](#)**

PREMIUM PLAN INCLUDES:

- Instant email delivery (PDF) download
- 30+ detailed 3D schematics
- Views from all angles
- Measurements for every part
- Full layouts for every step
- Step-by-step assembly instructions
- Full material / shopping list
- Full cutting list
- PRO-TIPS for every section
- Mobile / Tablet / PC / MAC friendly
- Beginner friendly



LEARN MORE!

AVAILABLE ONLY AT THE OFFICIAL 3DSHEDPLANS™ WEBSITE